



Regain your license in California

with an ignition interlock

How can I get my license back?

If you are reading this brochure, it is likely that you or a loved one has been pulled over for Driving Under the Influence (DUI). Getting an ignition interlock device (IID) installed in your vehicle is an important step in regaining your license in California. This brochure will take you through all the necessary steps based on your offense and will assist you in getting back on the road quickly and legally.*

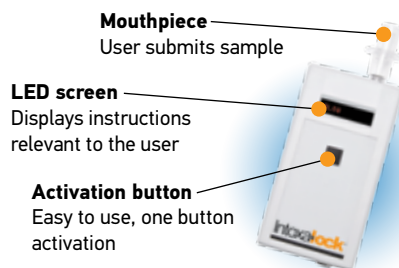
*State laws can change at any time. The information in this brochure is just a guideline. For the most up to date information, visit www.dmv.ca.gov/dl/driversafety

**85% OF INTOXALOCK CUSTOMERS
WOULD RECOMMEND US TO THEIR
FRIENDS OR FAMILY.***

*Based on 2014 customer satisfaction survey

What is an ignition interlock?

An ignition interlock device integrates breath alcohol testing with your vehicle's ignition system. Prior to starting your vehicle, you will need to submit a breath sample into the hand held portion of the device that tests for the presence of alcohol. If your Breath Alcohol Concentration (BrAC) is below California's ignition interlock limit (0.030), your vehicle will start. If alcohol is detected, your vehicle will not start until a passing sample has been provided.



About Intoxalock

Intoxalock has been manufacturing ignition interlocks for over 20 years. We were the first company to use fuel cell technology and we are an industry leader in reliability, customer service and technology.



- Over 70,000 customers served annually
- 1,300 service centers nationwide
- 20 years of industry leadership

Court order

The court may order you to install an IID with or without a Department of Motor Vehicle (DMV) requirement. You will be provided with a court order at the time of your hearing and it will specify when you need to install your IID and how long you will need it. Installing an IID as a requirement for a court order does not give you driving privileges. To be eligible to drive, you must have a restricted driver's license through the California DMV.

First offense

If you have been convicted of a first offense DUI in California, your license will be suspended for a minimum of six months. Depending on the circumstances of your arrest, you may be eligible immediately to apply for restricted driving privileges.

To apply for your restricted driving privileges, you will need to:

- Pay a fine ranging from \$390 to \$1,000
- Serve 48 hours to six months in jail
- Prove financial responsibility
- Provide proof of enrollment in a licensed driving-under-the-influence program

Second offense

If you have been convicted of a DUI in California, your license will be suspended for two to three years depending on the circumstances of your arrest. However, you may be eligible to regain your restricted driving privileges within 90 days.

Alcohol only (No injury)

- Two year suspension
- Eligible after 90 days

Alcohol only (With injury)

- Three year suspension
- Eligible after one year

Drugs with or without alcohol (No injury)

- Two year suspension
- Eligible after one year

Drugs with or without alcohol (With injury)

- Three year suspension
- Eligible after one year

To apply for your restricted driving privileges, you will need to:

- Install an ignition interlock device
- Pay all fines including, but not limited to a DUI penalty ranging from \$390 to \$1,000 and a \$15 restriction fee
- Provide proof of enrollment into an 18 month licensed driving-under-the-influence program or a 30 month program if available in your area
- Provide proof of SR22 insurance or proof of financial responsibility
- Clear all other outstanding suspensions and revocations on your driving record

LAST YEAR, INTOXALOCK
HELPED OVER 70,000 DRIVERS
GET BACK ON THE ROAD SAFELY
AND RESPONSIBLY.

Third offense

If you have been convicted of a third offense DUI in California, your license will be suspended for three to five years depending on the circumstances of your arrest. However, you may be eligible to regain your restricted driving privileges within six months.

Alcohol only (No injury)

- Three year suspension
- Eligible after six months

Alcohol only (With injury)

- Five year suspension
- Eligible after one year

Drugs with or without alcohol (No injury)

- Three year suspension
- Eligible after one year

Drugs with or without alcohol (With injury)

- Five year suspension
- Eligible after one year

To apply for your restricted driving privileges, you will need to:

- Install an ignition interlock device
- Pay all fines including, but not limited to a DUI penalty ranging from \$390 to \$1,000 and a \$15 restriction fee
- Provide proof of enrollment into an 18 month licensed driving-under-the-influence program or a 30 month program if available in your area
- Provide proof of SR22 insurance or proof of financial responsibility
- Clear all other outstanding suspensions and revocations on your driving record



Calibrations

The state of California requires that all ignition interlock devices be calibrated every 60 days. A calibration consists of exchanging your current device for a new one. During calibration, information can be downloaded and forwarded to the proper monitoring authority, if required.

Intoxalock auto-calibrations

Intoxalock offers its customers auto-calibrations in the state of California. When it is time for calibration, the LED screen will display a message alerting you it is time to exchange devices. Intoxalock will automatically send a new one to your selected service center. You simply need to visit your service center during the allotted calibration period and the technician can quickly exchange the device.



Intoxalock service center locations

Intoxalock has over 70 authorized service center locations throughout the state. **No other ignition interlock provider has more service centers in California.** Mobile servicing is also available in select locations.

Visit www.Intoxalock.com and enter your zip code to find the service center locations nearest to you.

6 reasons to call Intoxalock

- 1 Fastest way to regain your license
- 2 20 years of ignition interlock leadership
- 3 Largest service center network in California
- 4 Auto-calibrations ensure customer convenience
- 5 Most reliable technology in the industry
- 6 Second to none in customer service*



*Only ignition interlock company to receive 4 stars from Trust Pilot (Independent site)

What you can expect

- A patient and friendly customer service agent
- Specialists in California regulations
- Affordable pricing
- Convenient service center locations
- 24/7 customer support

THE FASTEST WAY TO GET BACK ON THE ROAD!

Call now! **(877) 276-0949** Hablamos español

Experts in California regulations
are ready to answer your questions.

Or visit www.Intoxalock.com/California

Intoxalock[®]
Helping people to live and drive responsibly

